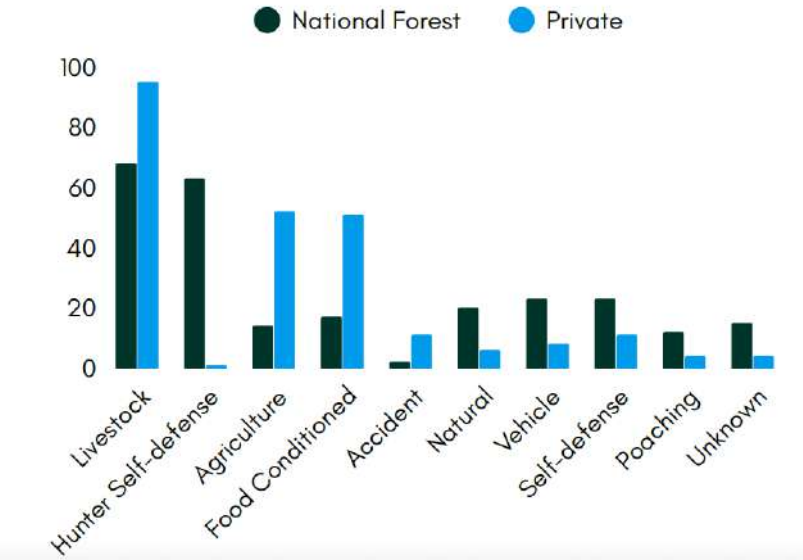


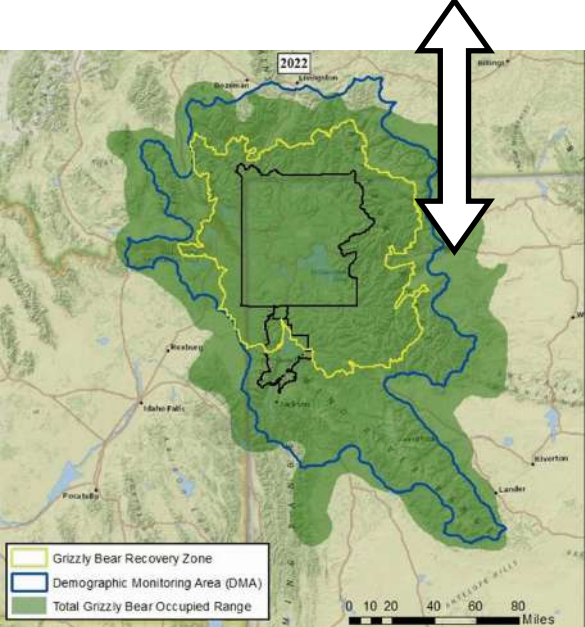


**Yellowstone's grizzly bears faced record mortalities two years in a row with 73 known deaths in 2024 and again in 2025. Grizzly bears need Endangered Species Act protections more than ever!**

Both Congress and the U.S. Fish and Wildlife Service appear to have plans to "delist" the Greater Yellowstone Ecosystem population of grizzly bears from the ESA. With a population of fewer than 1,000 bears, the Great Bear in the GYE could face extirpation, especially from livestock owners and elk hunters (who don't carry bear spray) in bear country. Yet, most conflicts are readily mitigated using a variety of non-lethal deterrents.



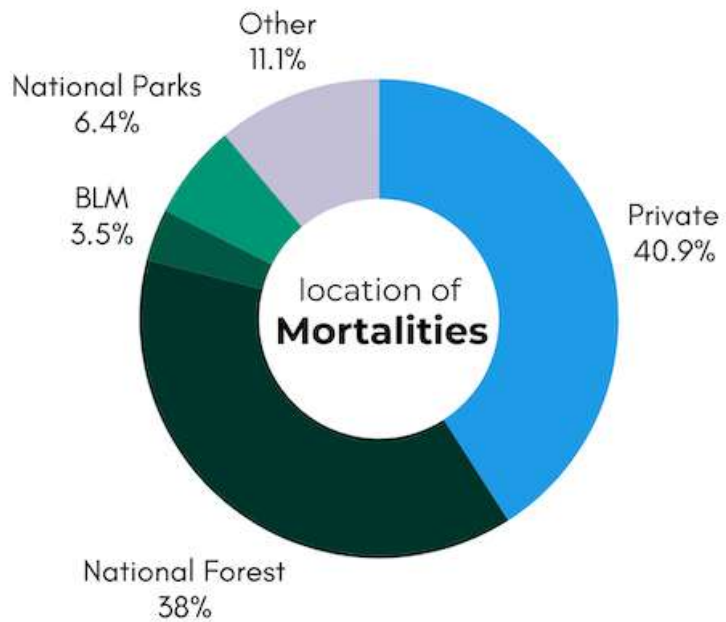
Since 2015, many GYE grizzly bear deaths occurred on private lands just outside the demographic monitoring area on the eastern side of recovery zone, but in 2025, a record 57 of 73 deaths were inside the DMA. (Map courtesy, USGS)



Grizzly bear mortality causes in the GYE on U.S. Forest Service and private lands, 2015-2025. (Data courtesy, USGS.)

**Only 27% of the Greater Yellowstone Ecosystem (and 10% of the DMA) is on private land, but 40% of grizzly bear mortalities occurred on private lands.**

Year	Known GYE grizzly bear mortalities
2015	61
2016	59
2017	56
2018	69
2019	42
2020	51
2021	71
2022	48
2023	49
2024	73
2025	73



**40%**

The number of grizzly bears who died on private lands in the GYE

**27%**

The amount of private lands in the GYE (10% of private lands are inside the DMA)

**38%**

The percentage of bears who died on USFS lands in the GYE

**48%**

The amount of USFS lands in the GYE (USFS is the largest landowner in GYE)

**6.4%**

The percentage of bears who died on National Park lands



**88%**

The number of GYE grizzly bear mortalities from human causes (2015-2025)

### Bears' foods at risk

Grizzly bears in the GYE evolved to eat cutthroat trout, army cutworm moths and whitebark pine seeds. But human actions including encroachment have diminished bears' traditional foods and access to relevant habitats. Recent droughts made berries and nuts harder to find too.